



Access Hardware

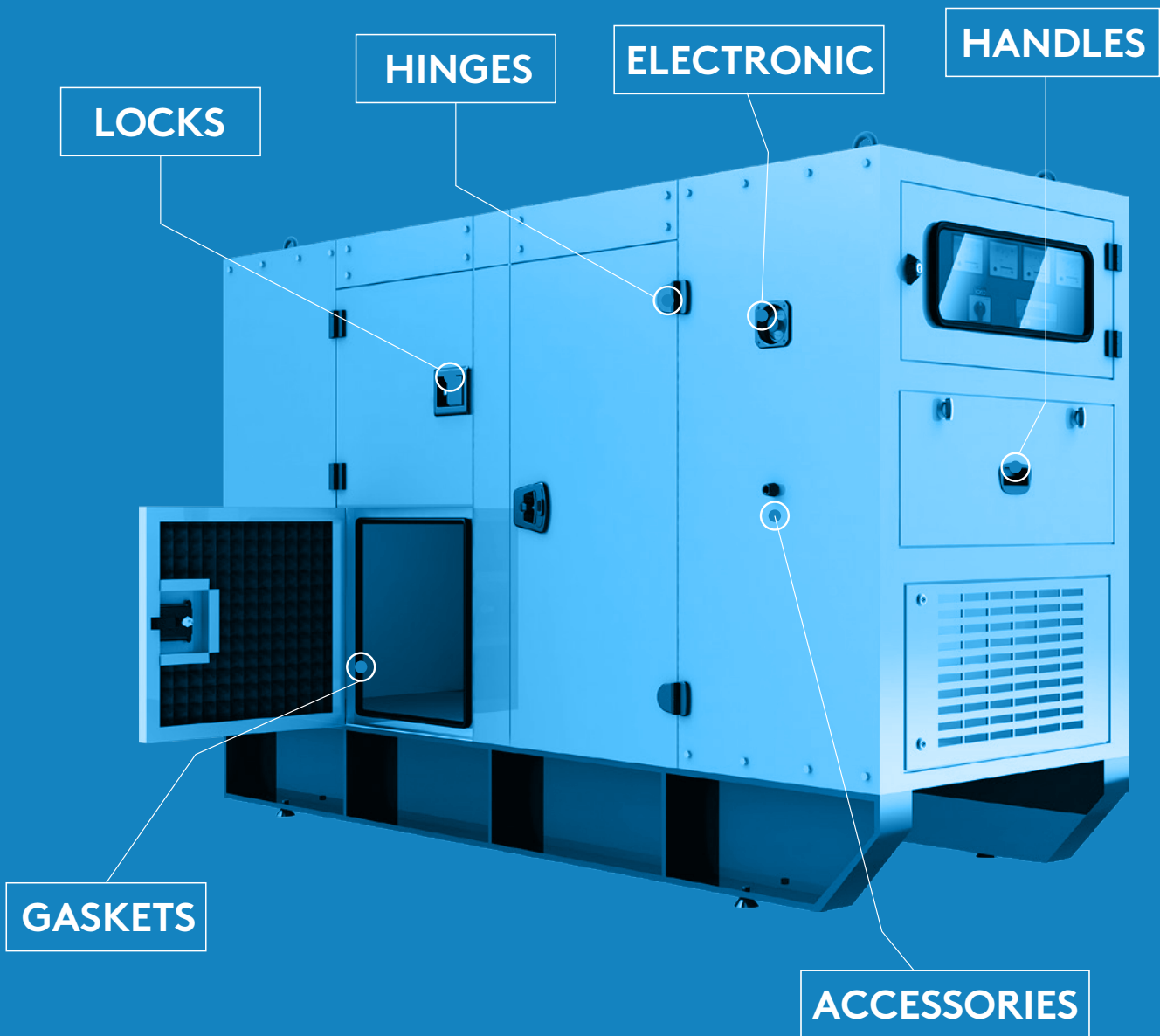
POWER GENERATOR





A CLOSER LOOK

POWER GENERATORS SOLUTIONS



We Meet Your Needs!

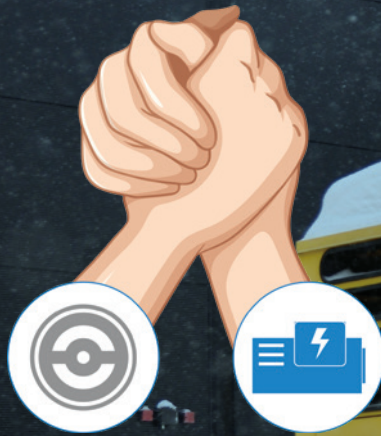
With our customer-centric designs, custom solutions and our wide range of standard products, we can meet all your needs for both basic and sound proof canopies.



**MORE
THAN
100
PRODUCTS**

WE ARE THE
**SOLUTION
PARTNER
OF THE WORLD'S
LEADING GENERATOR
MANUFACTURERS**





SOLUTIONS WHERE POWER MEETS SECURITY

SAFETY

Locks: A robust locking system is essential to protect the generator from unauthorized access. Various types of locks are available, each with its advantages and disadvantages.

Hinges: Generator hinges are also important for security. Hinges should be sturdy, making it difficult for thieves to open doors or panels. It is also important that the hinges are rust-resistant and do not need lubrication.

DURABILITY

Locks: Locks should be weather and abrasion-resistant. It is important that locks are resistant to rust or corrosion and can withstand extremely cold temperatures.

Hinges: Hinges must also be weather and abrasion-resistant. It is important that hinges are rust or corrosion-resistant and can support extreme weights.

ACCESS HARDWARE SOLUTIONS

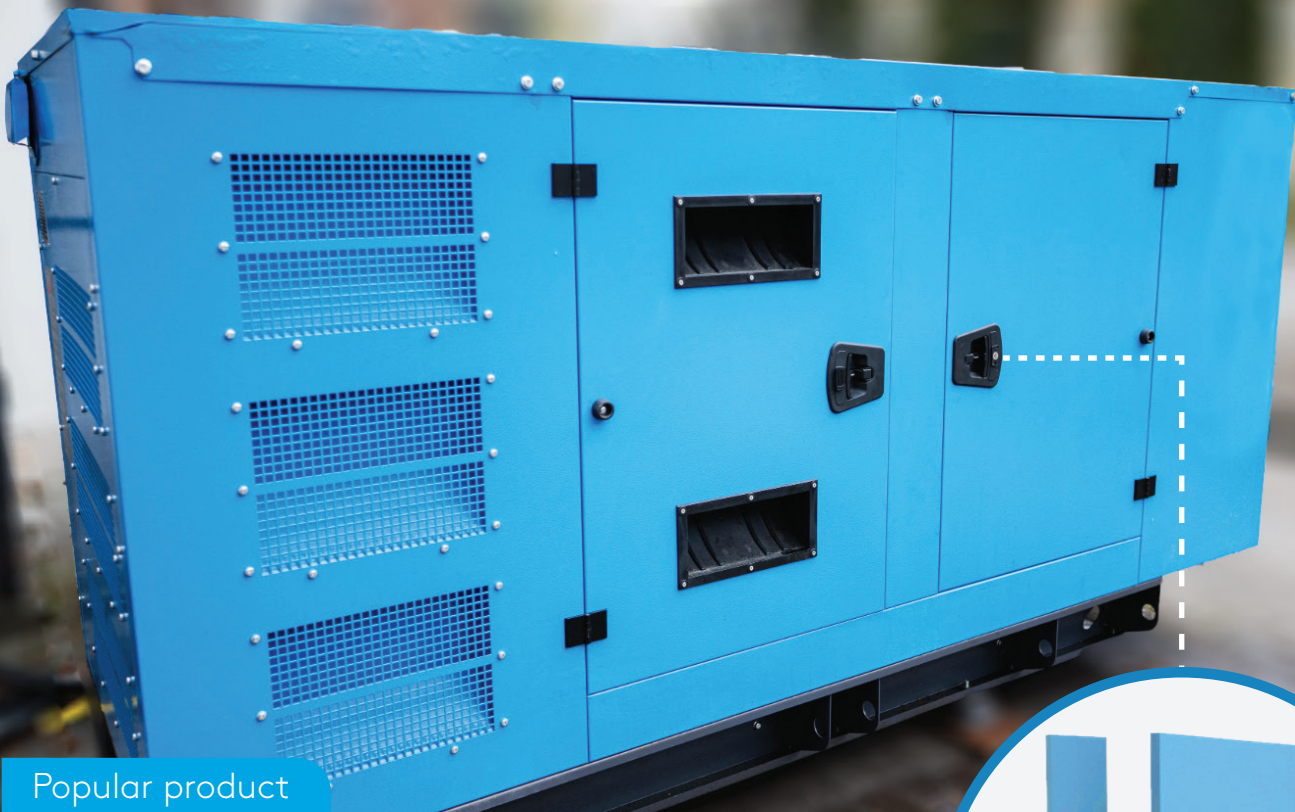
- Locks Latches
- Hinges
- Gaskets
- Accessories
- Electronic



We prioritize the protection of generator internals by providing high-quality locking systems to prevent unauthorized access and durable, weather-resistant hinges for smooth operation and enhanced security.

Our solutions minimize vibration and noise, reducing environmental impact and extending generator lifespan. With a comprehensive range of standard products and custom design options, we deliver tailored solutions for all generator enclosures.



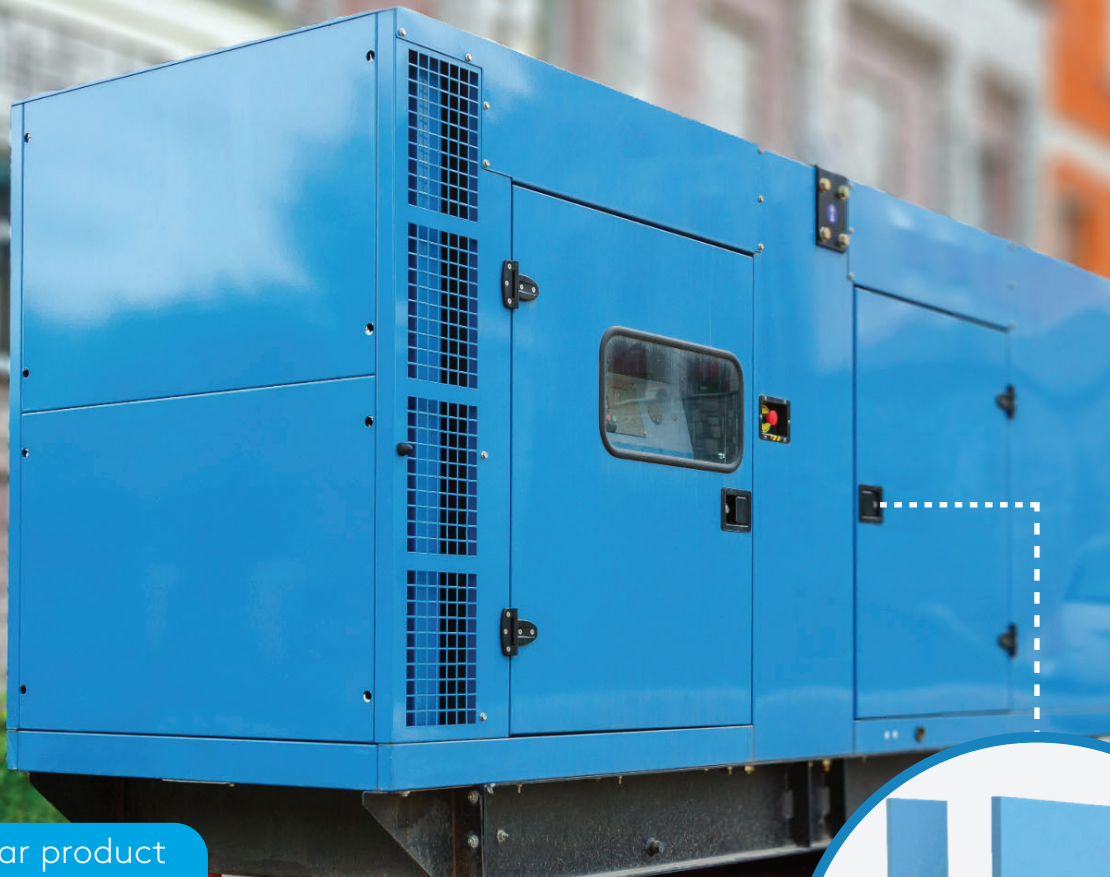


Popular product

ADJUSTABLE T HANDLE Flush Mount



This product provides robust and reliable locking performance with its strong handle structure. The handle is made of durable zamak material and is available in two finishes: black-painted or chrome-plated. It is IP65-rated, ensuring protection against water and dust ingress. The locking range can be adjusted between 10-60 mm and 40-80 mm. With a 4 mm compression feature, it ensures effective sealing and prevents leakage. The latch is resistant to vibrations, ensuring long-term durability in demanding environments. Quick installation is possible using fixed bolts or mounting brackets. Its flush design provides an aesthetic appearance when integrated into the application area. For high-security requirements, a padlock can be used.



Popular product

PADDLE LATCH

Push to Close



This product is constructed with a robust steel body and handle, finished with a black powder-coated surface. It is designed to fit a cut-out size of 84 mm (H) x 115 mm (W). The handle operates with a push-to-close or slam-shut mechanism. The locking bolt is made of brass, and a polyurethane seal ensures reliable sealing. A catch plate is required and can be custom-made to specifications, subject to a minimum order quantity. It is equipped with a medium-security die-cast zinc alloy cylinder lock and features an integral stainless steel dust cap. The product complies with IP54 standards for resistance to moisture and particle ingress.



PADDLE LATHES SOLUTIONS

Paddle Latches offer an easy push to close or slam shut actuation that closes your panel or door. These latches feature standard keyed cylinder locking.

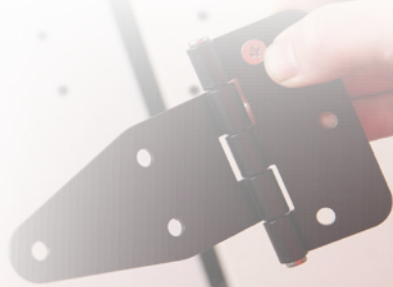
In our product range: Different kinds of materials such as steel, plastic, and stainless steel various dimensions, design, and functional options are available based on the application requirements.



T HANDLE HEAVY DUTY LOCKS & LATCHES

These products provide robust and reliable locking with a strong handle structure. In addition to a wide locking range, it can compress the doors. Resistant to vibration. Quick mounting with fixed bolts or fixing brackets is available. A padlock can be used for high-security requirements.

In our product range: Different kinds of materials such as steel, plastic, and stainless steel various dimensions, design, and functional options are available based on the application requirements.



HEAVY DUTY HINGES

These hinges operate through the articulation of two interconnected components, often referred to as 'leaves'.

They are designed to withstand harsh outdoor conditions. Hinges with fixed bolts provide an aesthetic appearance to the application surface, as well as quick installation and safety.

In our product range: Different kinds of materials such as zamak steel, plastic, and stainless steel as well as models designed by different specifications according to the application requirements are available.



GASKETS, HANDLES & ACCESSORIES

For your generator enclosures, we offer a comprehensive range of solutions including specialized gasket options to ensure minimal permeability and maximum acoustic insulation, ergonomic handles designed for the safe handling and opening of heavy-duty covers, emergency stop buttons for rapid intervention during power outages, various latch types, and other complementary components to meet all your enclosure needs.



QUARTER TURN & COMPRESSION LOCKS



Quarter-turn locks are designed to provide secure and reliable locking by fastening doors with a simple 90-degree turn. Compression locks, on the other hand, are engineered to effectively compress gaskets and securely close doors with a 180-degree motion. In addition to meeting IP/NEMA standards for protection, these locks minimize or eliminate noise and vibration, delivering enhanced operational performance and environmental sealing.



COMPRESSION TRIGGER LOCKS

Compression trigger locks reduce or eliminate noise and vibration. It works with the push-to-open method. It offers a minimum protrusion in the application area. In addition to offering a wide locking range, options with cylinder, without cylinder, and with driver are also available.

COMPONENT SOLUTIONS TO ENSURE, THE DURABILITY AND ORGANISATION OF YOUR GENERATORS



www.essentracomponents.com

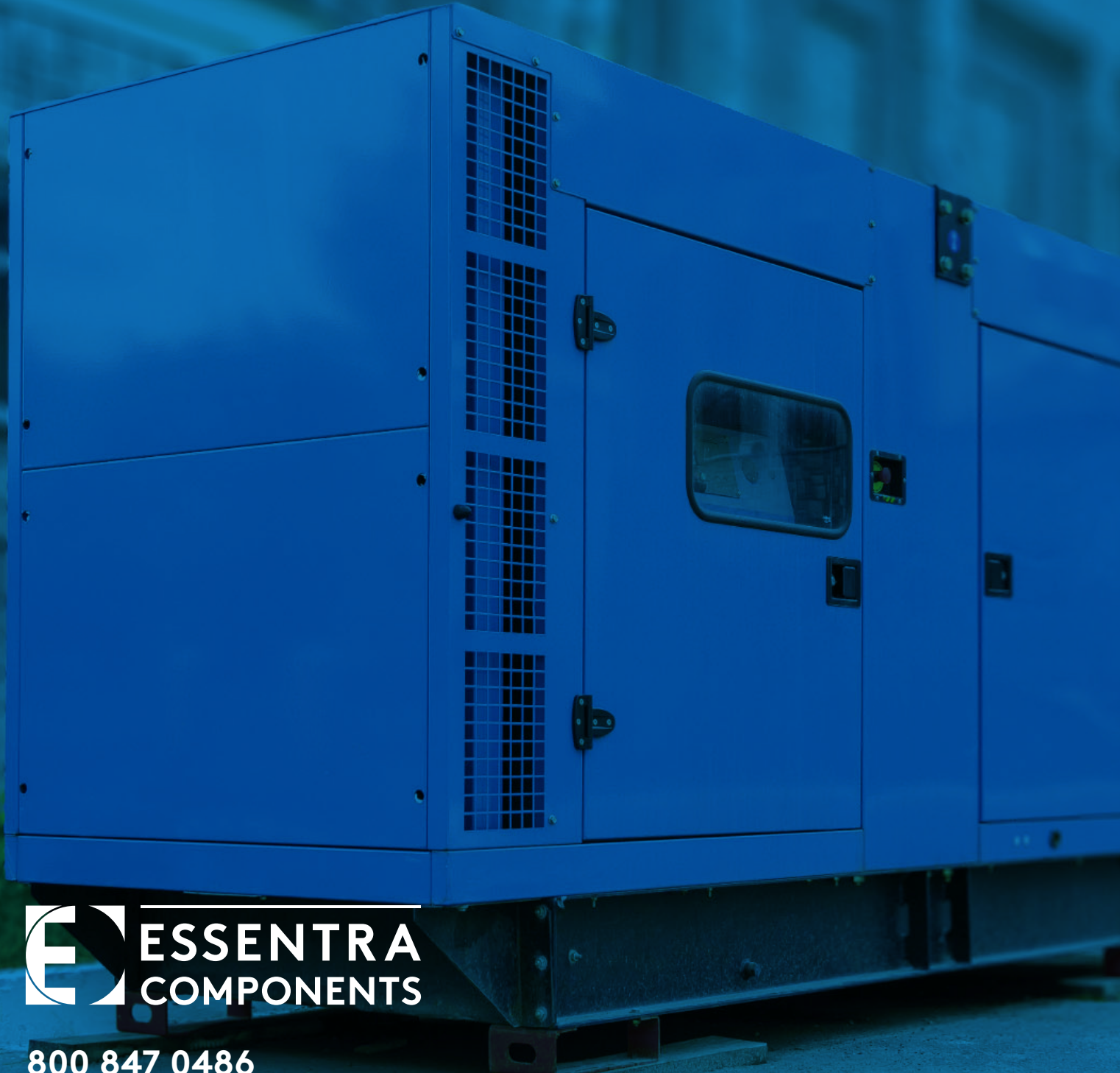
COMPONENTS Solutions offers a comprehensive range of products designed to enhance the durability, reliability, and organization of your generators.

Our cable clips, cable glands, cable ties, and spiral cable protectors ensure secure and reliable cable management. These components optimize cable organization, providing a neat, safe, and aesthetically pleasing appearance within your generator systems.

Additionally, our plugs, pipe clamps, anti vibration buffers, and rivets offer effective mounting and isolation solutions. These components enhance resistance to vibration and wear, ensuring increased durability and long-term performance. With their high-quality material construction, they deliver reliable and efficient operation under demanding conditions.

At COMPONENTS Solutions, we develop solutions that provide mechanical strength while simplifying installation processes. Our products are specifically designed to maintain performance in harsh operating environments, ultimately enhancing the efficiency and reliability of your generator systems.





800 847 0486
sales@essentracomponents.com

Essentra Components
2 Westbrook Corporate Center
Westchester, IL 60154

GENERATORS_0125_AMERS