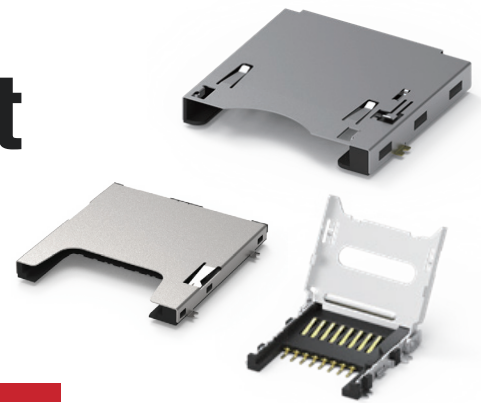




Memory Card Socket

CFexpress / CFast / CF / SD / Micro SD



Quick view:

- ATTEND Technology INC has launched a variety of memory card sockets to meet the needs of product designers.
- Compatible with the most common small flash memory cards.
- Suitable for a variety of memory cards, making it convenient, portable, and easy to capture special moments.
- Memory card sockets are available in a variety of formats, capacities, and speeds.
- As portable devices become smaller and thinner, and memory demands continue to increase, there is a growing need for removable storage devices to be more compact while still preserving design space.
- Memory card sockets are used in many small portable devices.

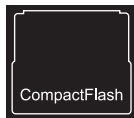
Memory Application



CFexpress Card



CFast Card



CF Card



SDXC Card



SDHC Card



SD Card



Micro SD Card

Applications

- ◆ 4K / 8K Video device
- ◆ Digital still camera
- ◆ High resolution portable device
- ◆ Consumer products
- ◆ Computers / Servers





Features

CFexpress (101M)

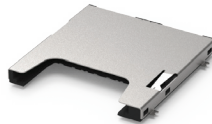
- ◆ Designed to be compatible with CFexpress type B cards / XQD cards
- ◆ Against vibration (Auto lock option)
- ◆ Stable transmission characteristics to meet PCI-e 3.0 standard
- ◆ Excellent performance of high durability with 12,000 cycles

Standard	CFast	CFexpress (Type B)
Speed	600 MB/s	2000 MB/s

333% UP

UHS-II SD (104I)

- ◆ Push Push SMT Type
- ◆ Durability 5,000cycle by UHS-II SD Card
- ◆ Operating temperature range: -25°C ~ 85°C
- ◆ Maximum transfer speed for UHS-II is up to 624MB/s

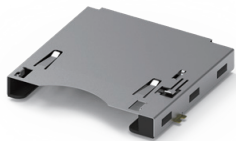


Standard	UHS-I	UHS-II
Speed	104 MB/s	624 MB/s

600% UP

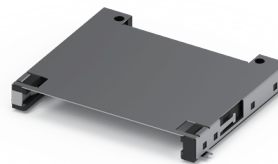
Items

CFexpress



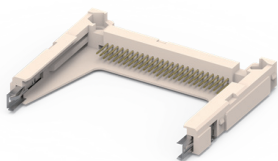
Push-Push, 101M-TE10
 Push-Pull, 101M-TE20
 Push-Pull w/Lock, 101M-TE30

CFast

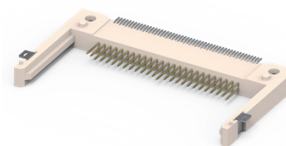


Push-Pull, H=6.05 / 8.35 mm, 120A-XXXD00
 Push-Pull w/Lock, H=8.35 mm, 120B-835D00
 Push-Push, H=6.05 / 8.35 mm, 120C-XXXD00
 Slim, H=4.15 mm, 120D-4C00
 Vertical w/o Lock, 120E-0G00
 Vertical w/Lock, 120E-1G00

CF



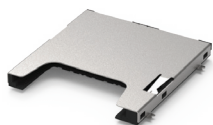
Type I/II, 101B-TAA0-R
 Ejector, L=20mm, 101C-ESB0-R



Standard / Reverse slim

Locating peg: 38.74mm, 101D-XAAB-R01
 Locating peg: 40.16mm, 101D-XAAA-R01
 Locating peg: 38.74mm, Stand off 1.4mm, 101D-XACB-R01
 Locating peg: 40.16mm, Stand off 1.4mm, 101D-XACA-R01

SD



UHS-II, Push-Push, 104I-TA01
 Push-Push w/switch, 104D-RCA0-RA1
 Push-Pull w/switch, 104-CTAA1
 Push-Push, 104D-TCA0-R06
 Push-Push, Stand off 1.8mm, 104D-TCC0-R06
 Push-Push w/Lock, 104H-TDA0-RA1

Micro SD



UHS-II, Push-Push, 112L-TDA0
 Push-Push, H=1.83mm, 112A-TAAR-R03
 Push-Push w/switch, H=1.85mm, 112J-TDA0-R01
 Hinge, 10u", 112C-TBAR-R02
 Push-Pull w/switch, 112I-TA01
 Push-Pull, short profile, 112K-TAA0-RA1
 Micro SD+SIM, Push-Push, 112G-TA00-R