



LAB &
RESEARCH
INSTRUMENTS



PRECISION | MADE IN SWITZERLAND

MICROCOPY FORCEPS

FOR AUTOCLAVE STERILIZATION
NEVERUST® STAINLESS STEEL

STRONG POINTS

Part#	Material	Quality	Length	Critical Tip Dimension (CTM)
00-SA	Anti-Mag. Neverust®	★★★	4.5" (113mm)	.018" X .010" .45mm X .25mm



STRAIGHT TAPERED FLAT ROUND POINTS

Part#	Material	Quality	Length	Critical Tip Dimension (CTM)
2A-SA	Anti-Mag. Neverust®	★★★	4.75" (119mm)	.059" X .008" 1.5mm X .2mm



VERY FINE POINTS

Part#	Material	Quality	Length	Critical Tip Dimension (CTM)
3C-SA	Anti-Mag. Neverust®	★★★	4.25" (106mm)	.007" X .004" .17mm X .1mm



TAPERED TIPS - VERY FINE POINTS

Part#	Material	Quality	Length	Critical Tip Dimension (CTM)
5-SA	Anti-Mag. Neverust®	★★★	4.25" (106mm)	.004" X .002" .1mm X .05mm



70° ANGLED FLAT SHARP POINTS

Part#	Material	Quality	Length	Critical Tip Dimension (CTM)
6-SA	Anti-Mag. Neverust®	★★★	4.5" (113mm)	.007" X .004" .17mm X .1mm



45° CURVED VERY FINE POINTS

Part#	Material	Quality	Length	Critical Tip Dimension (CTM)
7-SA	Anti-Mag. Neverust®	★★★	4.5" (113mm)	.007" X .004" .17mm X .1mm



MADE IN SWITZERLAND

PRECISION

FOR AUTOCLAVE STERILIZATION
NEVERUST® STAINLESS STEEL

DISSECTING FORCEPS

MEDIUM POINT

Part#	Material	Quality	Length 5" (125mm)	Critical Tip Dimension (CTM)
AA-SA	Anti-Mag. Neverust®	★★★	.008" X .008"	.2mm X .2mm



STRONG SERRATED POINTS

Part#	Material	Quality	Length 4.75" (119mm)	Critical Tip Dimension (CTM)
00D-SA	Anti-Mag. Neverust®	★★★	.018" X .010"	.45mm X .25mm



STRAIGHT BROAD FLAT POINTS

Part#	Material	Quality	Length 4.75" (119mm)	Critical Tip Dimension (CTM)
35A-SA	Anti-Mag. Neverust®	★★★	.288" X .016"	.73mm X .04mm



45° CURVED VERY FINE POINTS

Part#	Material	Quality	Length 4.5" (113mm)	Critical Tip Dimension (CTM)
123-SA	Anti-Mag. Neverust®	★★★	.020" X .028"	.7mm X .5mm



BROAD SERRATED POINTS

Part#	Material	Quality	Length 6.0" (150mm)	Critical Tip Dimension (CTM)
21-6-SA	Anti-Mag. Neverust®	★★★	.078" X .039"	2mm X 1mm



45° ANGLED MEDIUM SERRATED POINTS

Part#	Material	Quality	Length 6.0" (150mm)	Critical Tip Dimension (CTM)
24-6-SA	Anti-Mag. Neverust®	★★★	.019" X .012"	.5mm X .3mm



DISSECTING | CLEANROOM SAFE

TWEEZERS & FORCEPS

FOR AUTOCLAVE STERILIZATION
STAINLESS STEEL

DISSECTING - ADSON

Length 4.75"(119mm)

Part#	Material	Quality	Critical Tip Dimension (CTM)
AF-1-SE	Stainless Steel	★	.030" X .050" .75mm X 1.25mm



DISSECTING - ADSON

Length 4.75"(119mm)

Part#	Material	Quality	Critical Tip Dimension (CTM)
10H-S-SE	Stainless Steel	★	.02" X .384" 5mm X 9.6mm



DISSECTING - ADSON

Length 4.75"(119mm)

Part#	Material	Quality	Critical Tip Dimension (CTM)
10G-SA	Anti-Mag. Neverust®	★★★	.023" X .023" .58mm X .58mm



DISSECTING - ADSON

Length 4.87" (122mm)

Part#	Material	Quality	Critical Tip Dimension (CTM)
F-5-SE	Stainless Steel	★	.02" X .035" .5mm X .88mm



CLEANROOM SAFE | SOFT TISSUE

FOR AUTOCLAVE STERILIZATION
STAINLESS STEEL | TWEEZERS & FORCEPS

SOFT TISSUE HANDLING

Length 4.25" (106mm)

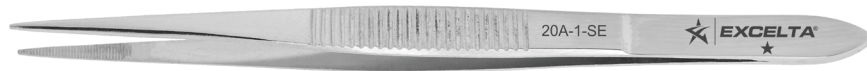
Part#	Material	Quality	Critical Tip Dimension (CTM)
F-7-SE	Stainless Steel	★★	.02" X .03" .5mm X .75mm



SOFT TISSUE HANDLING

Length 4.5" (113mm)

Part#	Material	Quality
20A-1-SE	Stainless Steel	★



SOFT TISSUE HANDLING

Length 4.5" (113mm)

Part#	Material	Quality	Critical Tip Dimension (CTM)
23B-S-SE	Stainless Steel	★	.12" X .06" 3mm X 1.5mm



SOFT TISSUE HANDLING

Length 4.75" (144mm)

Part#	Material	Quality	Critical Tip Dimension (CTM)
23D-S-SE	Stainless Steel	★	.12" X .06" 3mm X 1.5mm



ADSON TISSUE | CLEANROOM SAFE

TWEEZERS & FORCEPS

FOR AUTOCLAVE STERILIZATION
STAINLESS STEEL

SMALL SOFT TISSUE HANDLING

Part#	Material	Quality	Length	Critical Tip Dimension (CTM)
AF-2-SE	Stainless Steel	★	4.75"(119mm)	.065" X .071" 1.63mm X 1.78mm



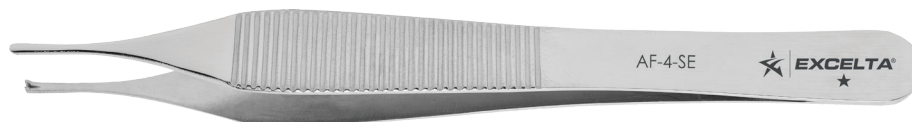
MEDIUM SOFT TISSUE HANDLING

Part#	Material	Quality	Length	Critical Tip Dimension (CTM)
AF-3-SE	Stainless Steel	★	4.75"(119mm)	.083" X .074" 2.08mm X 1.85mm



MEDIUM SOFT TISSUE HANDLING

Part#	Material	Quality	Length	Critical Tip Dimension (CTM)
AF-4-SE	Stainless Steel	★	4.75"(119mm)	.063" X .084" 1.58mm X 2.10mm



LARGE SOFT TISSUE HANDLING

Part#	Material	Quality	Length	Critical Tip Dimension (CTM)
F-6-SE	Stainless Steel	★★	4.5" (113mm)	.098" X .128" 2.45mm X 3.2mm



CLEANROOM SAFE DRESSING

FOR AUTOCLAVE STERILIZATION
STAINLESS STEEL

TWEEZERS & FORCEPS

45° Curved With Serrated Tips

Length 4" (100mm)

Part#	Material	Quality	Critical Tip Dimension (CTM)	
24-4-SE	Stainless Steel	★	.02" X .030"	.5mm X .75mm



90° Bent With Smooth Tips

Length 4" (100mm)

Part#	Material	Quality	Critical Tip Dimension (CTM)	
F-2-SE	Stainless Steel	★	.02" X .030"	.5mm X .75mm



90° Bent With Serrated Tips

Length 3.5" (88mm)

Part#	Material	Quality	Critical Tip Dimension (CTM)	
F-3-SE	Stainless Steel	★	.025" X .030"	.63mm X .75mm



45° Curved With Serrated Tips

Length 3.75" (94mm)

Part#	Material	Quality	Critical Tip Dimension (CTM)	
F-4-SE	Stainless Steel	★	.015" X .025"	.38mm X .63mm



MINIATURE | MADE IN SWITZERLAND

TWEEZERS & FORCEPS | FOR HIGH MAGNIFICATION

STRAIGHT TIPS WITH FINE POINTS

Part#	Material	Quality	Length 3.13" (78mm)	Critical Tip Dimension (CTM)
M-3-CO	Cobalt	★★★★★		.0037" X .0016" .08mm X .04mm



TAPERED TIPS WITH VERY FINE POINTS

Part#	Material	Quality	Length 3.13" (78mm)	Critical Tip Dimension (CTM)
M-5-CO	Cobalt	★★★★★		.0020" X .0004" .05mm X .01mm



75° ANGLED TIPS WITH SHARP POINTS

Part#	Material	Quality	Length 3.13" (78mm)	Critical Tip Dimension (CTM)
M-6-CO	Cobalt	★★★★★		.0027" X .0012" .07mm X .03mm



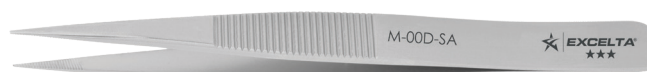
STRAIGHT TAPERED FLAT ROUND POINTS

Part#	Material	Quality	Length 2.75" (69mm)	Critical Tip Dimension (CTM)
M-2A-SA	Anti-Mag. Neverust®	★★★		.059" X .008" 1.5mm X .2mm



STRAIGHT MEDIUM SERRATED POINTS

Part#	Material	Quality	Length 3.38" (85mm)	Critical Tip Dimension (CTM)
M-00D-SA	Anti-Mag. Neverust®	★★★		.013" X .004" .33mm X .1mm



PLASTIC HANDLING

PRECISION

DISPOSABLE PLASTIC FORCEPS

TWEEZERS & FORCEPS

Straight Flat Points

Length 4.5" (115mm)

Part#	Material	Quality	Critical Tip Dimension (CTM)	
609	Acetal	★	.13" X .120"	3.25mm X 3mm



Straight Fine Points

Length 4.5" (115mm)

Part#	Material	Quality	Critical Tip Dimension (CTM)	
7 LER	Acetal	★	.008" X .010"	.2mm X .25mm



Straight Tapered Flat Points

Length 4.63" (116mm)

Part#	Material	Quality	Critical Tip Dimension (CTM)	
P2A	Acetal	★	.11" X .01"	2.75mm X .25mm



Flat Broad Points

Length 4.63" (116mm)

Part#	Material	Quality	Critical Tip Dimension (CTM)	
61	Acetal	★	.029" wide	7.25mm wide



SCISSORS | EXTREME PRECISION

DELICATE APPLICATIONS

FOR AUTOCLAVE STERILIZATION
STAINLESS STEEL

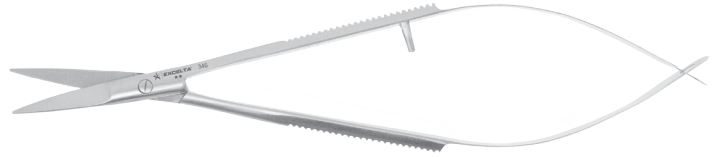
Extra Fine Blade Relieved Tip

Part #	Shape	Length	Blade Length
361	17°	3.25" (81mm)	1" (25mm)



Miniature Cutting

Part #	Shape	Length	Blade Length
346	Straight	4.50" (113mm)	.63" (16mm)



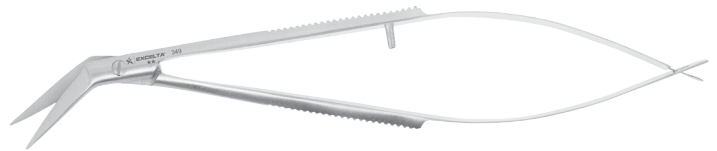
Fine Blade Relieved Tip

Part #	Shape	Length	Blade Length
362	17°	3.13" (78mm)	.88" (22mm)



Miniature Cutting In Confined Areas

Part #	Shape	Length	Blade Length
349	45°	4.50" (113mm)	.63" (16mm)



Round Blade

Part #	Shape	Length	Blade Length
363	17°	3.75" (94mm)	1.25" (31mm)



Extra Fine Blade Relieved Tip

Part #	Blade Length	Style	Length
355	.88" (22mm)	Angled	4" (100mm)



Fine Blade

Part #	Shape	Length	Blade Length
364	17°	3.75" (94mm)	1.25" (31mm)



Fine Blade Relieved Tip

Part #	Blade Length	Style	Length
354	.88" (22mm)	Angled	3.75" (94mm)



Fine Thin Blade

Part #	Shape	Length	Blade Length
365	10°	4" (100mm)	1.09" (27mm)



Fine Blade

Part #	Blade Length	Style	Length
357	1.11" (28mm)	Straight	3.85" (96mm)



EXTREME PRECISION

FOR AUTOCLAVE STERILIZATION
STAINLESS STEEL

SCISSORS

DELICATE APPLICATIONS

Curved Flat Blade

Part#	Blade Length	Style	Length
356	.88" (22mm)	Angled	4" (100mm)



Round Fine Blade

Part#	Blade Length	Style	Length
351	1.13" (28.25mm)	Straight	3.75" (95mm)



Extra Fine Blade Relieved Tip

Part#	Blade Length	Style	Length
358	1.79" (45mm)	Straight	5.35" (134mm)



Fine Blade

Part#	Blade Length	Style	Length
352	1.08" (27mm)	Straight	3.85" (96mm)



Fine Blade

Part#	Blade Length	Style	Length
353	1.9" (47.5mm)	Straight	6" (150mm)



Fine Blade Relieved Tip

Part#	Blade Length	Style	Length
359	2.4" (60mm)	Straight	6.5" (163mm)



SCISSORS

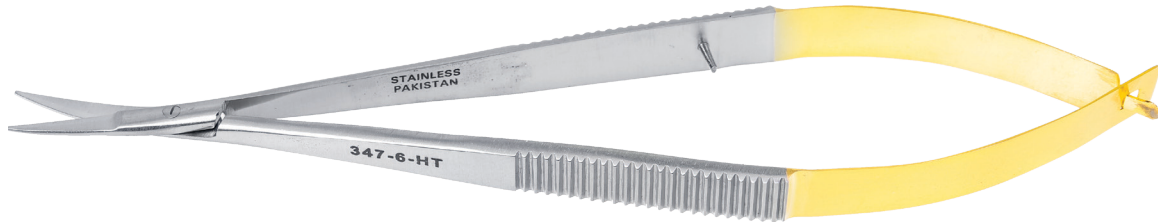
TUNGSTEN CARBIDE BLADES

DELICATE APPLICATIONS

Acid-proof, sterilizable and rust proof

Miniature Self-Opening Scissors For Confined Areas

Part #	Shape	Length	Blade Length
346-6-HT	Straight	5.50" (137mm)	.63" (15.90mm)
347-6-HT	Curved	6.00" (150mm)	.56" (14.23mm)



Short Thin Blade - Tight Intricate Work

Part #	Shape	Length	Blade Length
279-HT	Straight	3.50" (88mm)	.8" (20mm)



Medium Thin Blade - Intricate Work

Part #	Shape	Length	Blade Length
271-HT	Straight	4.50" (113mm)	1.17" (29.70mm)
270-HT	60°	4.50" (113mm)	1.27" (32.38mm)



Extra Long Blades - Round Blunt Tips For Safety

Part #	Shape	Length	Blade Length
371A	Straight	6.00" (150mm)	2" (50mm)
371B	20°	6.00" (150mm)	2" (50mm)



EXTREME PRECISION

SCALPELS

STAINLESS STEEL & DISPOSABLE PLASTIC

RAZOR BLADES

Stainless Steel Scalpel Blades ★★★

- 177-10 - Large Curved
- 177-11 - 10° Triangular
- 177-12 - Crescent
- 177-13 - Small Curved
- 177-15 - Fine



Scalpel Accessories

- 174 ★ Stainless Steel Blade Holder/Breaker
- 177A ★★★ Scalpel Blade Remover



Scalpel Handles / Disposable Scalpels

Part#	Quality	Description	Length
177	★★★	Stainless Steel Scalpel Handle	5.00" (125mm)
177-SE	★	Stainless Steel Scalpel Handle	5.00" (125mm)
178-11-S	★★★	Disposable Sterile Scalpel	5.75" (144mm)
175-11	★★★	Disposable Scalpel	3.25" (81mm)



Carbon Steel Razor Blades ★★★

Part#	Quality	Description
176-1	★★★	.009" Single Edge 2 facet Wrapped
176-2	★★★	.009" Single Edge 2 facet Unwrapped
176-3	★★★	.009" Single Edge 2 facet Unwrapped & Washed
176-4	★★★	.009" Single Edge 3 facet Wrapped



DISSECTION FINE PRECISION

K I T S E T S COMPLETE WITH VINYL CASE

KST-DIS-1

This kit comes complete with a zippered black vinyl case.

Part #	Description	Length
RU-1	Plastic ruler	6.00" (150.00mm)
DR-1	Glass dropper with rubber bulb	4.75" (120.00mm)
292	Scissors - Stainless Steel - Blade 1.5"(37.5mm)	4.50" (112.50mm)
20A-1-SE	Forceps with guide pin and serrated handles	4.50" (112.50mm)
333	Teasing needle with plastic handle	5.75" (143.75mm)
333F	45° Angulated teasing needle with plastic handle	6.00" (150.00mm)

KST-DIS-2

The KST-DIS-2 comes complete with a zippered black vinyl case.

Part #	Description	Length
RU-1	Plastic ruler	6.00" (150.00mm)
181-SE	#3 scalpel handle	5.00" (125.00mm)
181-10	10 pieces #10 scalpel blades	
181A-SE	#4 scalpel handle	5.50" (137.50mm)
181-22	10 pieces #22 scalpel blades	
179A	One piece straight scalpel with blade	6.50" (162.50mm)
333B	Straight Probe - Stainless Steel	5.00" (125.00mm)
333C	55° Angled Probe - Stainless Steel	4.87" (121.88mm)
333D	45° Angled Probe - Stainless Steel	6.00" (150.00mm)
333E	Straight Paddle Tip w/Eye Hole - Stainless Steel	6.00" (150.00mm)
F-7-SE	Straight Dressing Forceps	4.25" (110.00mm)
F-6-SE	Straight Tissue Forceps - 1 X 2 teeth	4.50" (115.00mm)
36A-SE	25° Curved Clamp - Stainless Steel - Serrated	5.50" (137.50mm)
277A	Dressing Scissors - Stainless Steel - 1.5"(37.5mm) Blade Length	5.50" (137.50mm)
274A	Dissection Scissors - Stainless Steel - 1.5"(37.5mm) Blade Length	4.62" (115.50mm)



HEMOSTATS

STAINLESS STEEL

35-SE ★★
5" Locking Hemostat with
Straight Serrated Jaws.
Made of Stainless Steel,
clean room safe.



35-PH ★★
5" Locking Hemostat with
Straight Serrated Jaws.
Made of Stainless Steel
with vinyl-coated handle.



36-SE ★★
5" Locking Hemostat with
Curved Serrated Jaws.
Made of Stainless Steel,
clean room safe.



36-PH ★★
5" Locking Hemostat with
Curved Serrated Jaws.
Made of Stainless Steel
with vinyl-coated handle.



37-SE ★★
6" Locking Hemostat with
Straight Serrated Jaws.
Made of Stainless Steel,
clean room safe.



37-PH ★★
6" Locking Hemostat with
Straight Serrated Jaws.
Made of Stainless Steel
with vinyl-coated handle.



38-SE ★★
6" Locking Hemostat with
Curved Serrated Jaws.
Made of Stainless Steel,
clean room safe.



38-PH ★★
6" Locking Hemostat with
Curved Serrated Jaws.
Made of Stainless Steel
with vinyl-coated handle.



PROBES

RAZOR BLADES



★★★ Fine Tip Stainless Steel Dissecting Probes

REF. NO.	TIP SIZE	STYLE	LENGTH
330A	10 mil	Straight	6"
330B	10 mil	Angle	6"
330C	10 mil	Curved	6"
330D	10 mil	Hook	6"
330E	10 mil	Angle Chisel	6"
330K		one each 330 A-D	

SPATULAS

MADE IN SWITZERLAND



Miniature Spatulas Applicators

REF. NO.	TIP SIZE	STYLE	LENGTH
260A	.010"	Black	2 1/2"
260B	.015"	Blue	2 1/2"
260C	.020"	Green	2 1/2"
260D	.025"	Red	2 1/2"

NOTES:

To see our full line of Precision Hand Tools as well as Custom Hand Tools for all types of industries including Bio-Medical Manufacturing & Research, Electronics Assembly, Military Manufacturing & Consumer Electronics. Please visit us online at www.excelta.com

Or call us at **805-686-4686** to request our latest catalog with our full line of products.

Lazerline® Cutters



Tweezers



Custom Tools



Pliers



EXCELTA®
SINCE 1957

☎ 805.686.4686

🌐 excelta.com